

# DTSAgent User Documentation

Overview .....	1
Installation .....	2
Application Installation .....	2
Database Installation .....	4
DTSAgent Configuration .....	5
Initial Configuration .....	5
Re-configuring DTSAgent .....	6
Launching DTSAgent .....	7
Installing and Uninstalling DTS Packages .....	8
Installing DTS Packages .....	8
Uninstalling DTS Packages .....	8
Configuring Static Parameters .....	9
Executing DTS Packages .....	10
Scheduling DTS Package Execution .....	12

## Overview

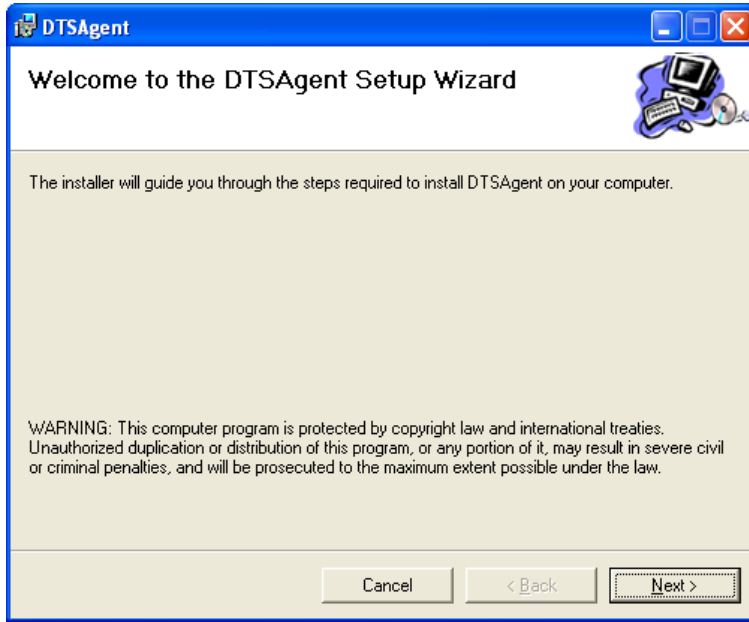
The DTSAgent is a utility used by end users to configure and execute SQL Server DTS packages.


This document details the installation, configuration, and execution of the DTSAgent application version 1.0.0.5.

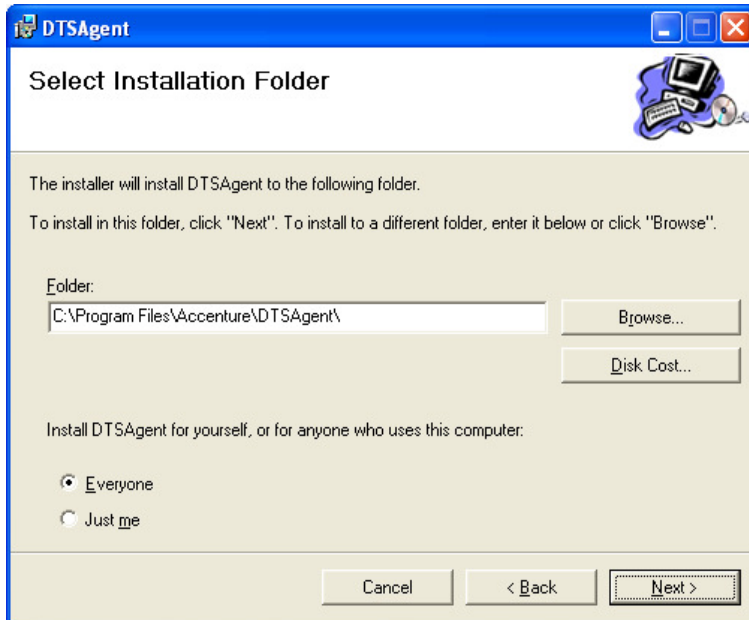
# Installation

## Application Installation

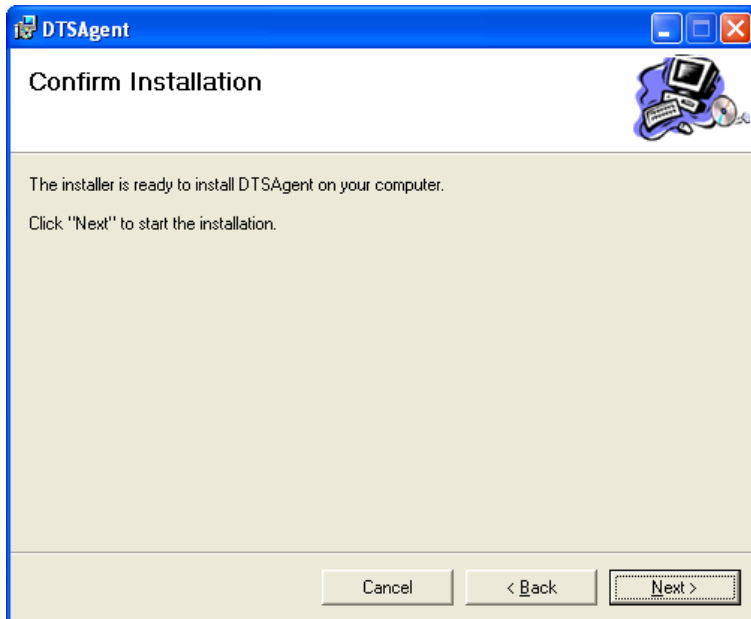
Installation of DTSAgent is accomplished by executing the install file setup.exe, found within the DTSAgent setup folder. Executing this file will display the **Welcome** page for the installation.

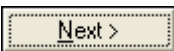


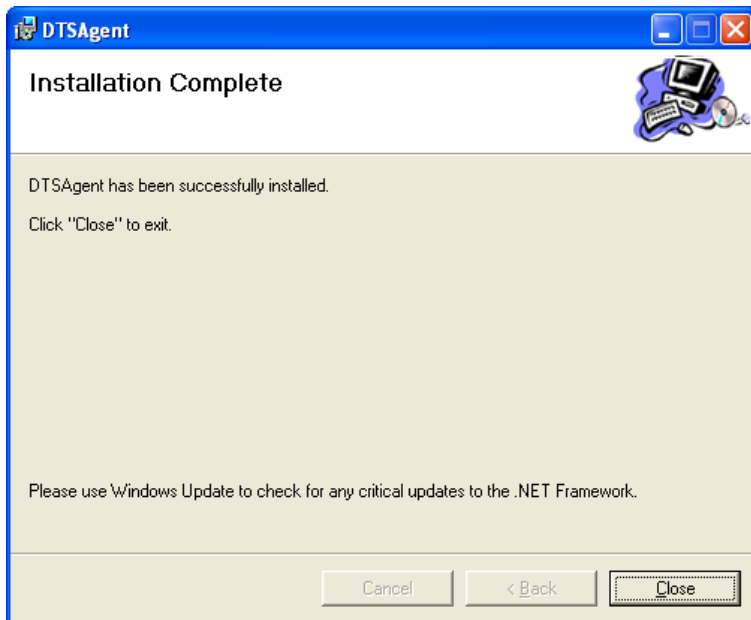
Select  to continue to the **Select Installation Folder** page.

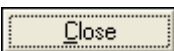


Accept the defaults for this page then select  to proceed to the **Confirm Installation** page.



Select  to complete the installation.



Select  to close the installation application.

Your application installation is complete. You will now see a new program group named **Accenture** when navigating to **All Programs** from your **Start Menu**. This program group will contain a folder named **DTSAgent** which will contain a shortcut to the **DTSAgent** application.



## **Database Installation**

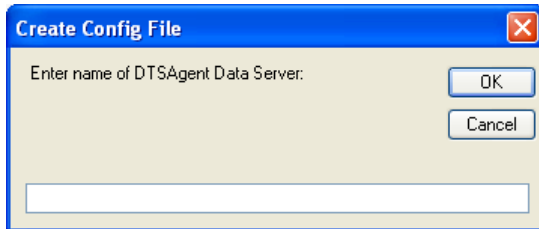
Database installation should be completed before executing DTSAgent. Scripts for the DTSAgent database will be provided as part of the initial deployment. These scripts will be executed by a database administrator on the SQL Server and will be accompanied with specific instructions where needed.

# DTSAgent Configuration

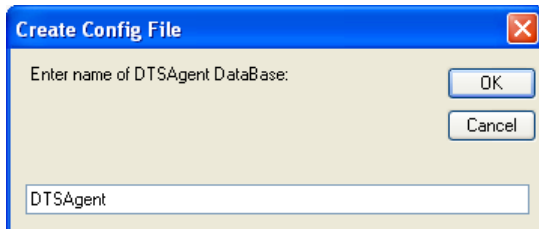
## Initial Configuration

The first time you run DTSAgent, you may be prompted for configuration data for the application. Follow these instructions for completing the initial configuration.

The first prompt will ask for the name of the DTSAgent Data Server. Enter the appropriate name and select **OK**.



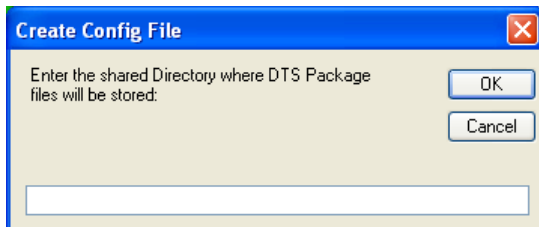
The second prompt will ask for the name of the DTSAgent DataBase. By default, this is DTSAgent. Accept the default or enter the appropriate name and select **OK**.



The third prompt asks for the **Shared Directory** where DTS Package files will be stored. This path will be a shared location accessible by all installations of DTSAgent.

Example: **\\DataServer\DTSAgentPackages**

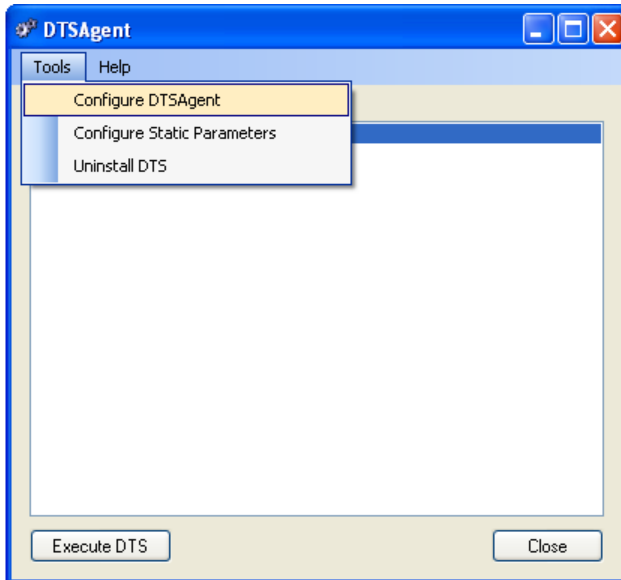
Enter the full path of the shared directory and select **OK** to continue.



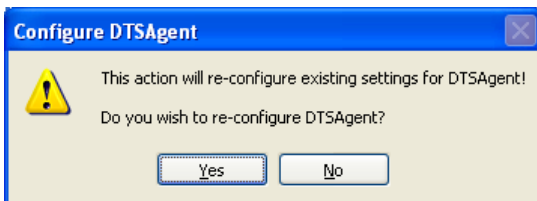
This completes the initial configuration.

## Re-configuring DTSAgent

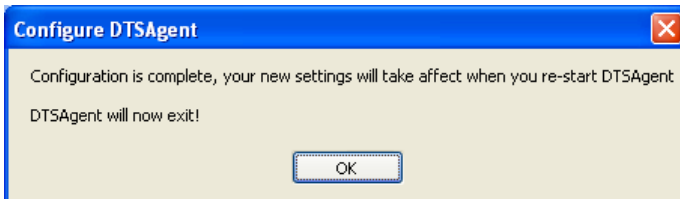
If DTSAgent needs to be re-configured at any time, this is accomplished by accessing the **Configure DTSAgent** menu item from the **Tools** menu.



When selecting the **Configure DTSAgent** menu item, you will be prompted to confirm your intention to re-configure this application.



After clicking **Yes**, you will receive the same three prompts discussed above under **Initial Configuration**. The prompts will be pre-populated with the current values. Modify each value as needed. After the final prompt, DTSAgent will display this message:



The next time you launch DTSAgent, the new configurations will be employed.

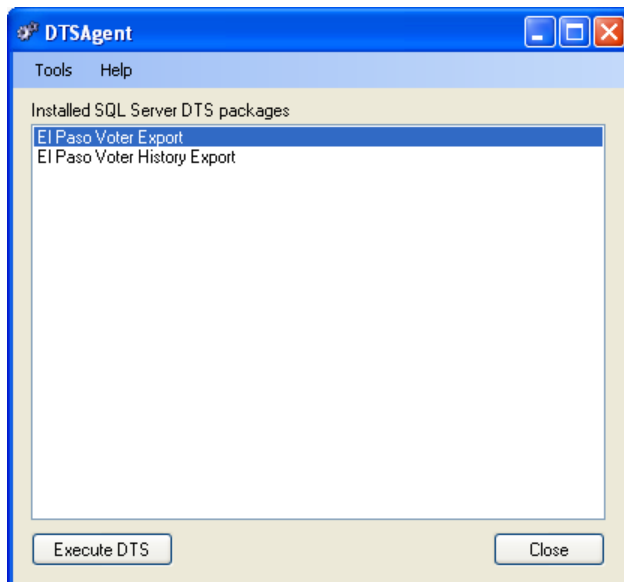
## Launching DTSAgent

To launch DTSAgent, select the DTSAgent shortcut on the **Start Menu**.

Navigation: **Start Button** → **All Programs** → **Accenture** → **DTSAgent** → **DTSAgent Shortcut**

Alternatively, you may launch DTSAgent by executing **DTSAgent.exe**, located in the Accenture Program Files folder **C:\Program Files\Accenture\DTSAgent**. Note: your Program Files folder may be in a different path! If you cannot locate this path, consult your administrator.

Once DTSAgent is launched, you will see the main menu.



# Installing and Uninstalling DTS Packages

## Installing DTS Packages

DTS packages consist of a package file with an extension of “.dts”, and a configuration file of the same name and an extension of “.xml”.

Example DTS package files for installation:

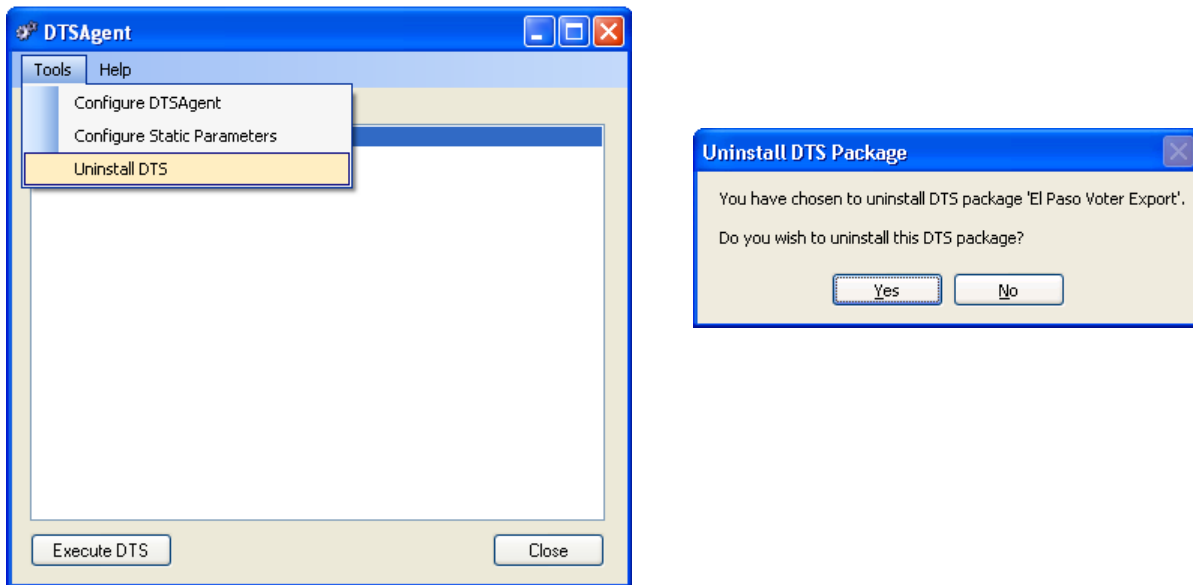
SampleDTSPackage.dts  
SampleDTSPackage.xml

To install a DTS package, these two files are copied to the shared DTS directory. This is the shared directory configured in the configuration section.

After copying the files to the appropriate directory, DTS Packages are installed automatically by DTSAGENT at startup.

## Uninstalling DTS Packages

To uninstall a DTS package, select the package to be uninstalled and select **Uninstall DTS** from the **Tools** menu on the main DTSAGENT screen. DTSAGENT will display a message confirming your intentions.



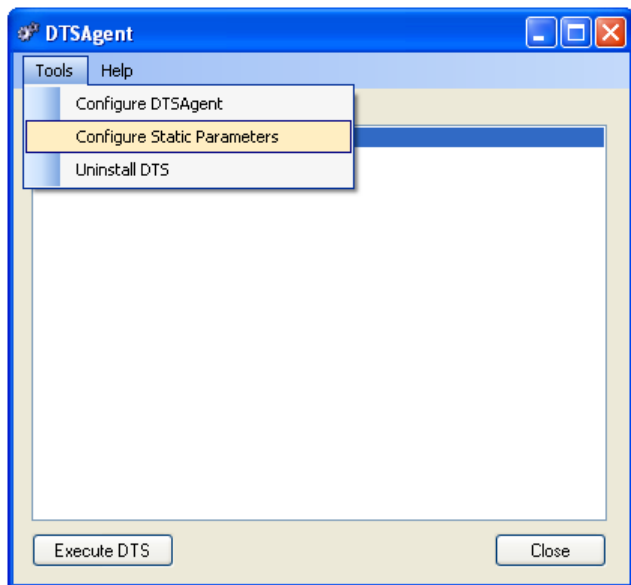
Select **Yes** to uninstall the DTS package, or **NO** cancel the request.



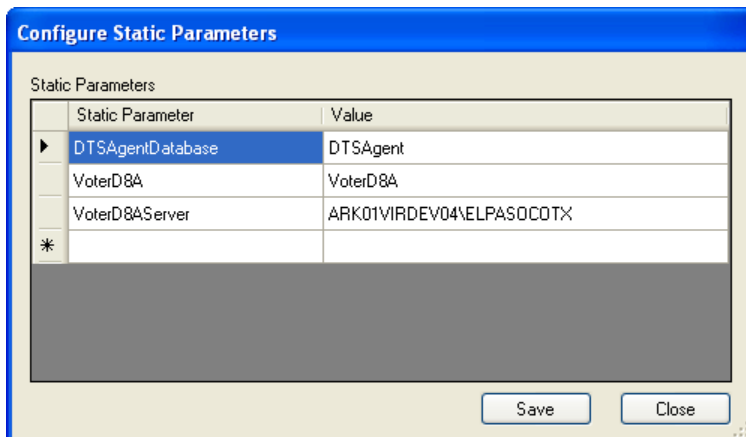
## Configuring Static Parameters

Static Parameters are common variables shared by DTS packages. For example, an installation of DTSAgent used in conjunction with ESM might have a static parameter named VoterD8AServer which is used by all associated DTS packages, and has a value that rarely changes.

To configure static parameters, select **Configure Static Parameters** from the Tools menu.



This action will open the **Configure Static Parameters** screen.



From this screen, you may add, delete, or modify static parameters. When finished with your configurations, click the **Save** button before closing the window.

Note: Static Parameter values will rarely change! Modifying static parameters might affect multiple DTS Packages that utilize the modified parameters. Saving the modifications will result in the modified values being employed by subsequent DTS package executions. Parameters that change often are Dynamic Parameters and will be addressed in greater detail in the section **Executing DTS Packages**.

# Executing DTS Packages

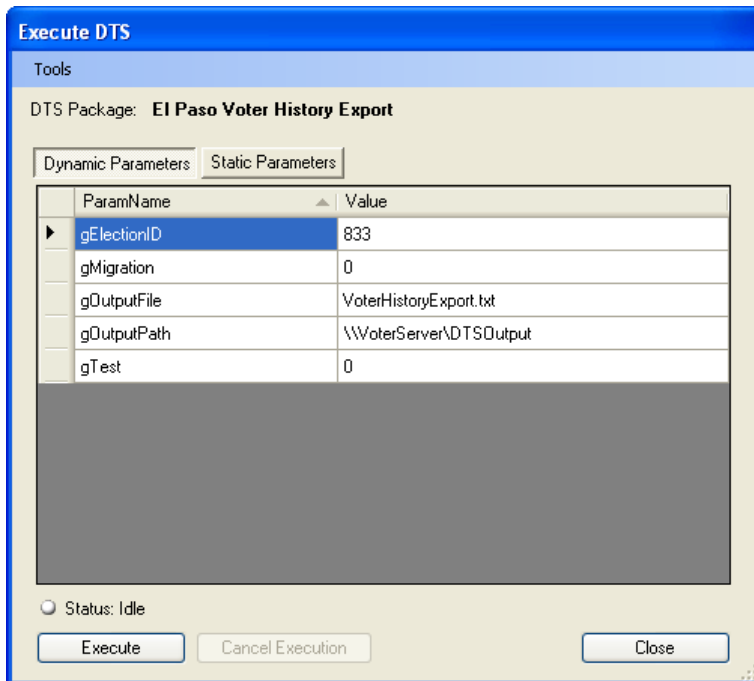
There are two ways to execute a DTS Package using DTSAgent.

1. Execution through the interface.
2. Execution from the command line.

Command line execution is designed to facilitate scheduling of DTS execution. If you are executing a DTS package on demand, it is recommended to employ the DTSAgent interface for this purpose.

To execute a DTS package, select the target package and click on the **Execute DTS** button.

This will open the **Execute DTS** window.



This window allows you to configure both **Dynamic Parameters** and **Static Parameters** before executing the DTS Package. To configure the parameters, click in the appropriate value field and enter the desired value. Notice that values for some parameters are initialized when this window is opened. In many cases, this is the same value employed the last time this package was executed.

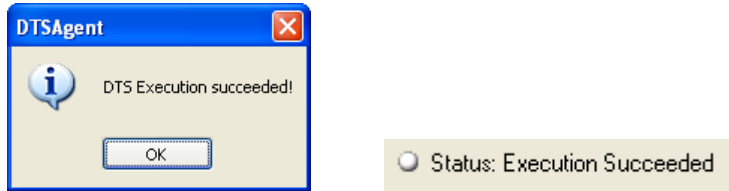
Each DTS package will have its own unique set of parameters. Refer to the documentation specific to the selected DTS package for additional parameter information.

Note: You should never need to configure the Static Parameters as these are constant values! If you find a static parameter is not correct, you may modify it from this window but you should correctly configure the static parameter as discussed in the section **Configuring Static Parameters**.

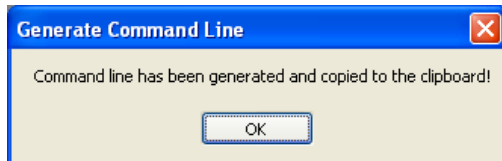
To execute the DTS package, click on the **Execute** button. The Status text will update to show current execution. The status icon will change to an alternating red and blue during execution.

 Status: DTS Package Executing, please wait! Start Time = 1:53 PM

When the DTS package execution is complete, a message box will be displayed to confirm completion status. In addition to this message, the status indicator icon will return to white and the status message will indicate completion status.



DTS packages may also be executed from the command line. To do so, an appropriately formatted command must be created. The easiest way to do this is to configure parameters for a selected DTS package as discussed above, but instead of executing the DTS package, select **Generate Command Line** from the **Tools** menu on the **Execute DTS** screen to create the command text. Choosing this menu item will generate the command text, copy the generated text to the Window's clipboard, and display a message to this effect.



To access this text, simply paste the results into the text editor of your choice, such as notepad.

Sample command line text:

```
"C:\Program Files\Accenture\DTSAgent\DTSAgent.exe" /dtspkg="El Paso Voter History Export" /param:gElectionID="833" /param:gMigration="0" /param:gOutputFile="HistoryExport.txt" /param:gOutputPath="\\VoterServer\DTSAgent\Export" /param:gTest="100"
```

This text may be modified as necessary before execution. For example, the value "833" assigned to parameter "gElectionID" could be changed to "834",

The command line switches recognized by DTSAgent are:

- **/dtspkg** – This switch is required and will contain the name of the DTS package. This is the same name that is displayed on the interface, but not necessarily the name of the dts file itself. The syntax for this switch is **/dtspkg=** followed by the name, enclosed in quotes.
  - Example: **/dtspkg="El Paso Voter History Export"**
- **/param** – This switch is used to supply parameters and their values to DTSAgent for the package being executed. The syntax for this switch is **/param:** followed by the parameter name, which is followed by the equals character = and the value enclosed in quotes.
  - Example: **/param:gElectionID="833"**

To execute from the command line, use the command text from a command utility. This text can also be used to schedule DTS execution, as discussed in the section **Scheduling DTS Package Execution**.

To access data files created by DTS exports, refer to the specific DTS configuration for the appropriate location. Hint: Most DTS packages will configure this location as a dynamic parameter, meaning YOU choose this location when you execute the package.

## Scheduling DTS Package Execution

Scheduling DTS Package execution requires the use of a scheduling tool such as Window's Scheduler. The document cannot describe such tools or provide instructions for their usage. This section will give suggestions for this task.

### Suggestions:

- Use the built in command line functionality described in the section **Executing DTS Packages** to generate command text to be used with the chosen scheduler.
- Carefully plan the scheduling of long running DTS executions:
  - Avoid overlapping DTS executions as this may degrade performance or cause record locking issues.
  - Schedule around network or database activity such as backups.
- Be certain to utilize a login and password that has appropriate rights for executing DTS packages, including permissions for data servers as well as network shares where data will be exported.