

-From
Black

FastTrac

eSlate™ *Electronic Voting System*

FastTrac

Operations Manual

Software V. 01.03.00

*Hart InterCivic
Election Solutions Group*

*1650 Coal Creek Drive, Suite E
Lafayette, Colorado 80026*

Phone: 303.385.6440 Fax: 303.385.6477

© Copyright 1999-2001 Hart InterCivic
6000-091 Rev. A



Hart InterCivic, Election Solutions Group is committed to election integrity and customer satisfaction. All products, components, and services provided to our customer shall be safe, secure, and effective for their intended use, and they shall meet or exceed the quality and reliability levels expected by the marketplace.

FROM

Black

Box

Voting

Document

Archives-

Contents

About This Book	5
Overview	5
System Architecture	6
Documentation Roadmap	7
Chapter 1 Using FastTrac	9
Preparation of Modems	9
Preparing the FastTrac Application to Receive Results	10
Steps for Starting FastTrac	10
Steps for Setting FastTrac to use the modem's COM port	11
Steps for Clearing old data from FastTrac	12
Monitoring Results Transmissions from Polling Places	13
Steps for Sending results from a Judges Booth Controller to FastTrac	13
Steps for Watching FastTrac receive results	15
Duplicate transmissions	16
Chapter 2 Reports	17
The Summary Report - All Contests Report	17
Header printed on the Summary Report - All Contests report	17
Footer printed on the Summary Report - All Contests report	18
Steps for Viewing the Summary Report	18
Steps for Printing the Summary Report	19

-From Black Box Voting Document Archives-

About This Book

Main Topics

Overview, this page.
System Architecture on page 6.
Documentation Roadmap on page 7.

Overview

This manual describes how to use the FastTrac software application to collect unofficial Election Day results after the polls have been closed at polling places that used the eSlate™ Precinct Voting System (PVS).

The data is received by FastTrac from each of the PVS Judges Booth Controllers via a modem connected to an analog telephone line (see **Figure 1**).

FastTrac combines the results received from the polling places and updates the **Summary Report - All Contests** report after each successful transmission.

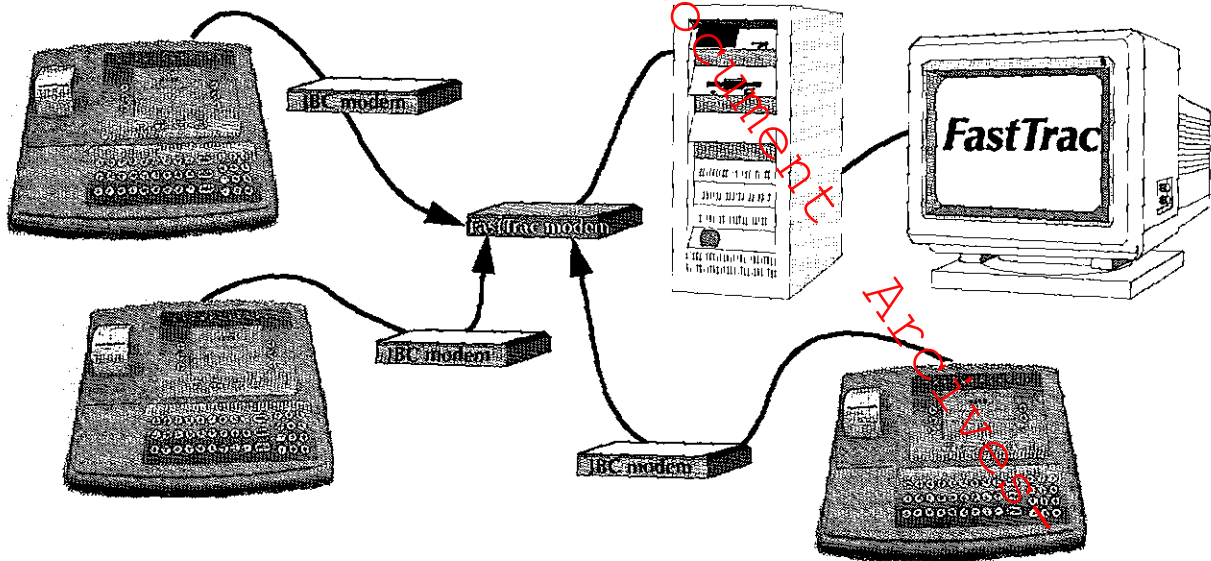


Figure 1 Results are transmitted to the FastTrac computer via modems attached to Judges Booth Controllers.

System Architecture

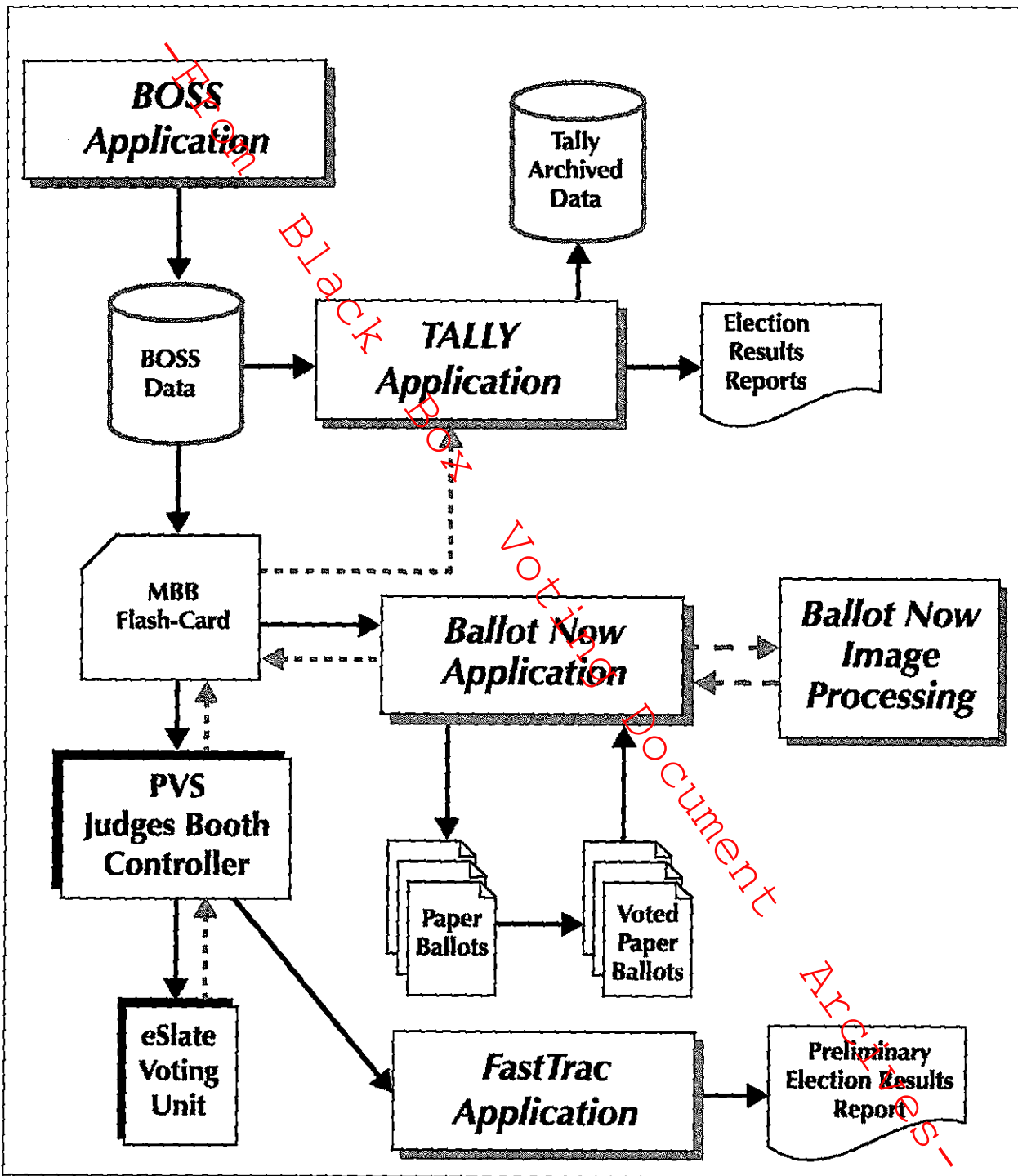


Figure 2 System architecture for eSlate Electronic Voting System.

Documentation Roadmap

Manuals for the eSlate™ Electronic Voting System software and equipment from Hart InterCivic, Election Solutions Group include the following:

eSlate™ FastTrac Operations Manual (this book)

This manual describes how to use the FastTrac software application to receive unofficial Election Day results after the polls have been closed at polling places that used the eSlate™ Precinct Voting System (PVS).

eSlate™ Ballot Origination Software System Operations Manual

This manual describes how to use the Ballot Origination Software System™ software application, referred to as BOSS, to create an Election database from which you can create MBBs (Mobile Ballot Box™) for use with the eSlate Electronic Voting System.

eSlate™ Precinct Voting System Election Day Manual

This manual describes how to set up and use the eSlate™ Precinct Voting System (PVS) equipment in a polling place on Election Day.

eSlate™ Precinct Voting System Early Voting Manual

This manual describes how to set up and use the PVS equipment in Early Voting polling places.

eSlate™ Precinct Voting System DAU 5000 Voting Unit Setup Manual

This manual describes how to set up and use the DAU 5000™ voting units.

eSlate™ Tally System Operations Manual

This manual describes how to use the Tally™ application software to read and tally the votes on MBBs that were used during an election.

Ballot Now Operations Manual

This manual describes how to manage paper ballots for an election created from the eSlate Electronic Voting System.

eSlate™ Electronic Voting System Product Description

This manual describes how the various software and equipment components of the eSlate Electronic Voting System are used to run an election.

-From Black Box Voting Document Archives-

Chapter 1

Using FastTrac

Main Topics

Preparation of Modems, this page.
Preparing the FastTrac Application to Receive Results on page 10.
Monitoring Results Transmissions from Polling Places on page 13.

Preparation of Modems

The following setups must be ready in order to use FastTrac:

- ◆ **BOSS** — The telephone number of the modem line attached to the FastTrac computer must have been defined in the BOSS database that was used to write MBBs for the Election. This telephone number definition is created in the BOSS **Jurisdiction** window's **Rules** tab using a format of
NNN NNN NNNN
- ◆ **PVS Polling Place** — A modem, with the DIP switches for *Smart Mode* and *Display Result Codes* set to ON, must be connected to:
 - an analog telephone line that does not require access digits to make an outgoing call,
 - power with the modem's power adapter cord (120V AC 50Hz 16.5W), and
 - the Judges Booth Controller's Modem port using the adapter cord (25-pin male connector on one end, 9-hole female connector on the other end).
- ◆ **FastTrac Computer** — A modem, with the DIP switches for *Smart Mode* and *Display Result Codes* set to ON, must be connected to:
 - an analog telephone line that answers the telephone number defined in the BOSS database,
 - power with the modem's power adapter cord (120V AC 60Hz 16.5W), and
 - the FastTrac computer's COM 1 modem port using the adapter cord (25-pin male connector on one end, 9-hole female connector on the other end).

Preparing the FastTrac Application to Receive Results

About an hour before the polls close on Election Day, make FastTrac ready to receive data from the PVS Judges Booth Controllers.

To get FastTrac ready:

- ◆ Connect the modem to the FastTrac computer (described on page 9).
- ◆ Start FastTrac (see **Steps for: Starting FastTrac**, this page).
- ◆ Set the COM port (see **Steps for: Setting FastTrac to use the modem's COM port**, on page 11).
- ◆ Clear FastTrac (see **Steps for: Clearing old data from FastTrac**, on page 12).

NOTE: A password is required to clear data from the FastTrac application. If you do not know your password, contact your System Administrator.

Steps for: Starting FastTrac

✓ To start the FastTrac application:

- 1 Click **Start**, the Start button on the Windows task bar.
- 2 From the **Start** menu, choose **Programs-->Hart InterCivic-->FastTrac**.
The **Fast-Trac** window appears (see **Figure 1-1**).

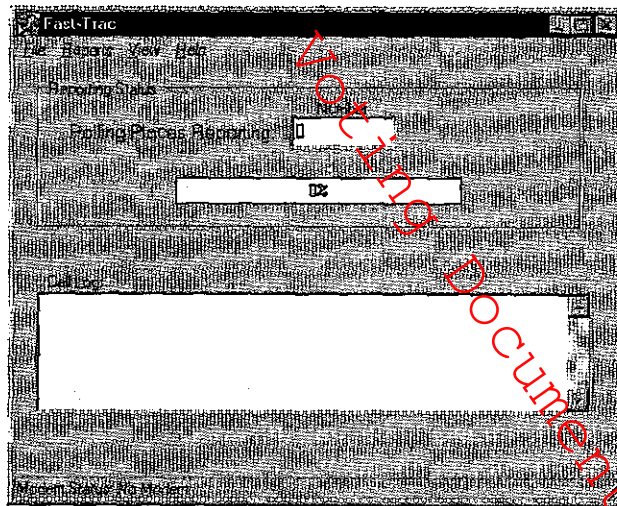


Figure 1-1 Fast-Trac window with **Modem Status: No Modem**.

Steps for: Setting FastTrac to use the modem's COM port

The modem to be used with FastTrac must be connected to the computer's COM 1 port.

- ✓ To set FastTrac to communicate with the COM 1 port:
 - 1 Make sure the modem is connected to:
 - the computer's COM 1 port,
 - power, and
 - the telephone line that answers the telephone number defined in the BOSS database.
 - 2 Start Fast-Trac as described on page 10.
 - 3 From the **View** menu, select **CONFIG**.
The **Configuration** window appears (see Figure 1-2).
 - 4 Click in the **COM 1** check box to place a check mark in it.

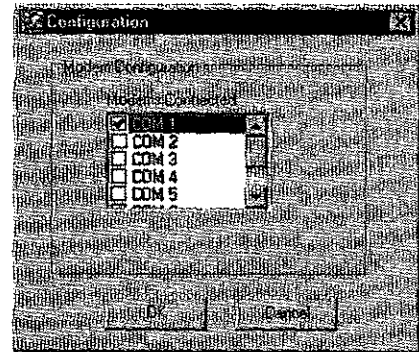



Figure 1-2 Configuration window.

- 5 Click  in the **Configuration** window.
 - The **Configuration** window closes.
 - The Fast-Trac window's status message displays **Modem Status: Waiting for Call** (see Figure 1-3).

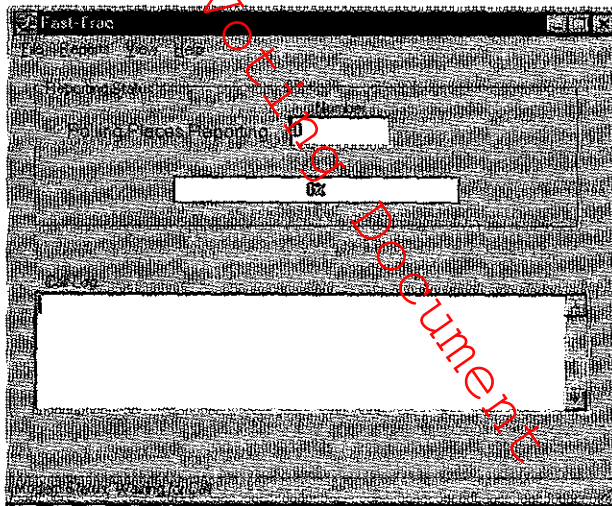


Figure 1-3 Fast-Trac window with Modem Status: Waiting for Call.

- 6 Now FastTrac has recognized the modem.

Steps for: Clearing old data from FastTrac

If the **Fast-Trac** window contains timestamps and Polling Place IDs in the **Call Log** section when you open it to receive results for a new Election (see **Figure 1-4**), FastTrac must be initialized to clear old data.

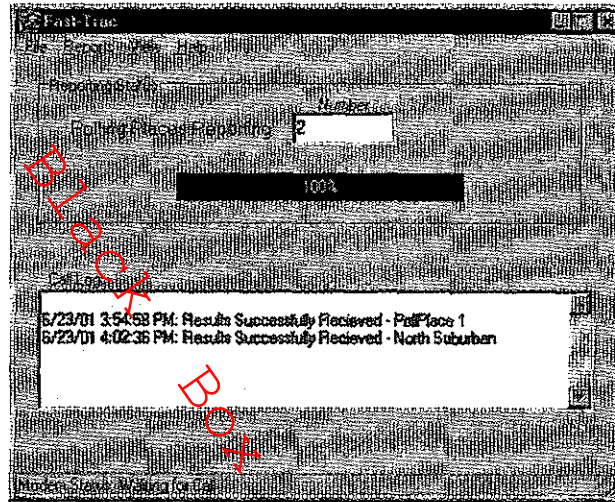


Figure 1-4 Fast-Trac window with existing results in the Call Log.

✓ To set the election results currently resident in FastTrac to zero:

1 From the **File** menu, select **New**.
The **Password** window appears (see **Figure 1-5**).

2 Type the password.

3 Click in the **Password** window.

- The **Password** window closes.
- The **Call Log** section of the **Fast-Trac** window clears.

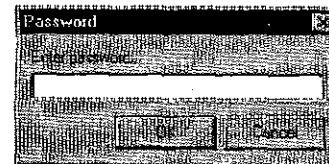


Figure 1-5 Password window.

4 Now FastTrac is ready to receive results from the polling places.

Monitoring Results Transmissions from Polling Places

At a polling place, the election judge can modem the results from their polling place as soon as they have:

- ◆ issued the command to close the polls on the Judges Booth Controller and
- ◆ connected the modem to the Judges Booth Controller (described on page 9).

Steps for: Sending results from a Judges Booth Controller to FastTrac

- 1 When the election judge has closed the polls, the **Polls Closed** screen appears on the Judges Booth Controller (see Figure 1-6).

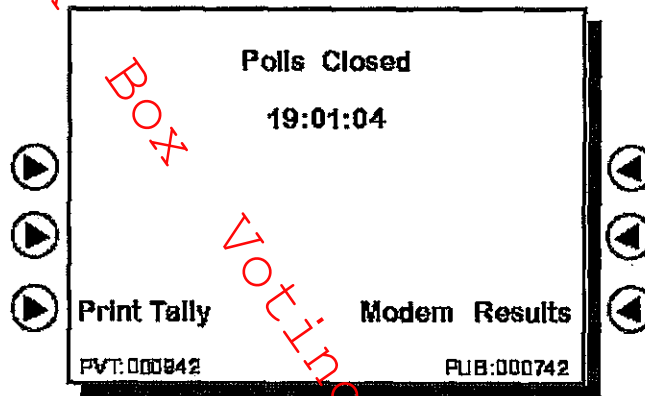


Figure 1-6 Polls Closed screen on the Judges Booth Controller.

- 2 The election judge presses the **Modem Results** softkey.
- 3 The modem connected to the Judges Booth Controller dials the FastTrac computer's modem.
- 4 The **Modem Transfer in Progress** screen appears on the Judges Booth Controller (see Figure 1-7).

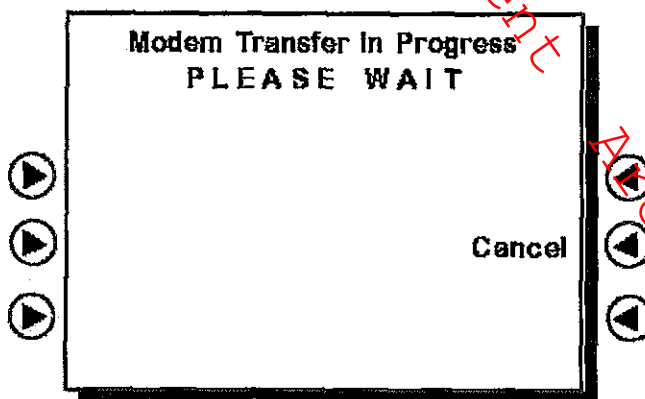


Figure 1-7 Modem Transfer in Progress screen on the Judges Booth Controller.

5 The election judge will wait until the **Results of Modem Transfer** screen appears on the Judges Booth Controller.

If the modem connects to the FastTrac computer's modem, the results will be downloaded to FastTrac and the **Results of Modem Transfer** screen will display the message **Successful Transfer** (see **Figure 1-8**).

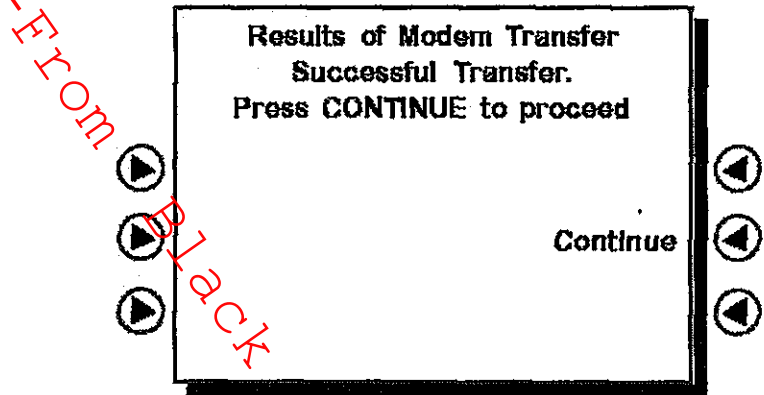


Figure 1-8 Results of Modem Transfer : Successful Transfer screen on the JBC.

6 The election judge will press the **Continue** softkey to return to the **Polls Closed** screen.

From Black Box Voting Document Archives

Steps for: Watching FastTrac receive results

- 1 When the FastTrac computer's modem is dialed from a Judges Booth Controller, you will hear "handshaking" sounds from the FastTrac computer's modem.
- 2 When the results have been successfully received from a Judges Booth Controller:
 - the timestamp and Polling Place ID will be listed in the **Call Log** section of the **Fast-Trac** window (see **Figure 1-9**),
 - the number in the **Polling Places Reporting** field of the **Reporting Status** panel of the **Fast-Trac** window will increment by one,
 - the percentage bar in the **Reporting Status** panel of the **Fast-Trac** window will show the current percentage of the polling places that have been received out of the possible polling places, and
 - the **Summary Report - All Contests** report will be updated.

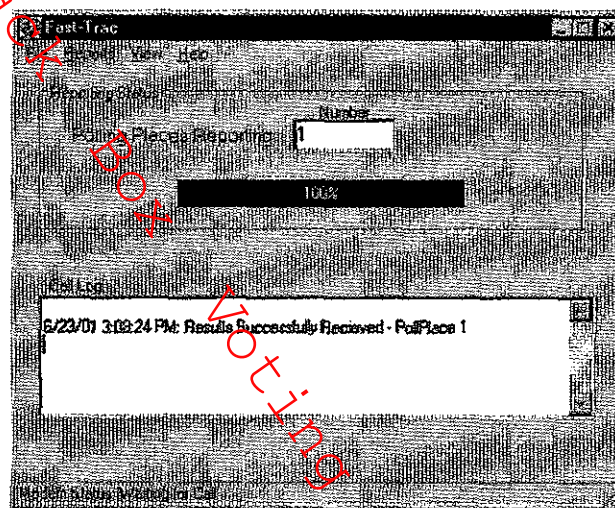


Figure 1-9 Fast-Trac window showing successful receipt of results from a Judges Booth Controller.

- 3 Now you can view and print the **Summary Report - All Contests** report (see **Chapter 2 Reports**, page 18 and page 19).
- 4 When FastTrac has received results from all polling places, the percentage bar in the **Reporting Status** panel of the **Fast-Trac** window will show **100%**.

Duplicate transmissions

If an election judge erroneously repeats the modemming process after results have already been received by FastTrac, the **Call Log** section of the **Fast-Trac** window will list the transfer as a duplicate, along with the timestamp and Polling Place ID (see **Figure 1-10**), but will not add the results to the data.

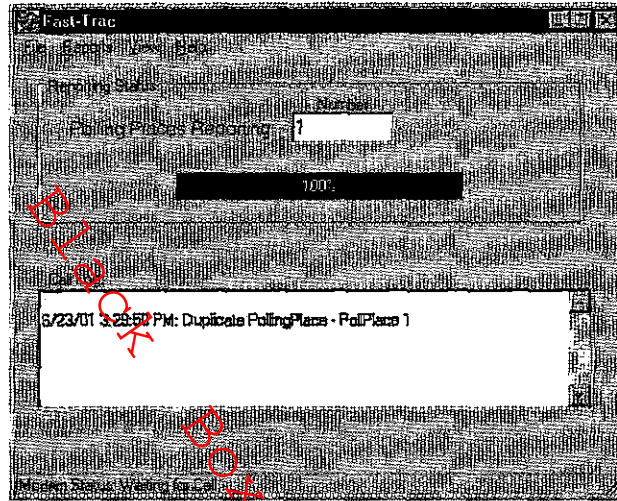


Figure 1-10 Fast-Trac window showing a duplicate transmission from a Judges Booth Controller.

Chapter 2

Reports

Main Topics

The Summary Report - All Contests Report, this page.

- ◆ Viewing the Summary Report on page 18.
- ◆ Printing the Summary Report on page 19.

The Summary Report - All Contests Report

For each contest, the **Summary Report - All Contests** report lists:

- ◆ contest name
- ◆ candidate or choice
- ◆ number of votes FastTrac has received for a candidate or choice
- ◆ percent of votes for a candidate out of the total votes FastTrac has received for the contest
- ◆ total votes FastTrac has received for the contest

Header printed on the Summary Report - All Contests report

The information that appears at the top of each page of the **Summary Report - All Contests** report is described in **Table 2-1**.

Table 2-1 Heading information at the top of each page of the **Summary Report - All Contests** report.

Report name	The name of the report.
Election name	The name of the Election.
Jurisdiction name	The name of the jurisdiction.
Election date	The date of the Election.
Total Number Voters	The number of cast ballots received.
Polling Places Reporting	The number of polling places from which results have been received by FastTrac.

Footer printed on the Summary Report - All Contests report

The information that appears at the bottom of each page of the **Summary Report - All Contests** report is described in **Table 2-2**.

Table 2-2 Footer information at the bottom of each page of the **Summary Report - All Contests** report.

Summary Report of all Contests	Subtitle of the report.
page number	Shows the number of the current page.
Printed On	Show the date and time the report was printed.

Steps for: Viewing the Summary Report

NOTE: You can view the **Summary Report - All Contests** report at any time.

- ✓ To view the **Summary Report - All Contests** report:
- ◆ From the **Reports** menu, select **All Contests**.
The **Print Preview** window appears (see **Figure 2-1**).

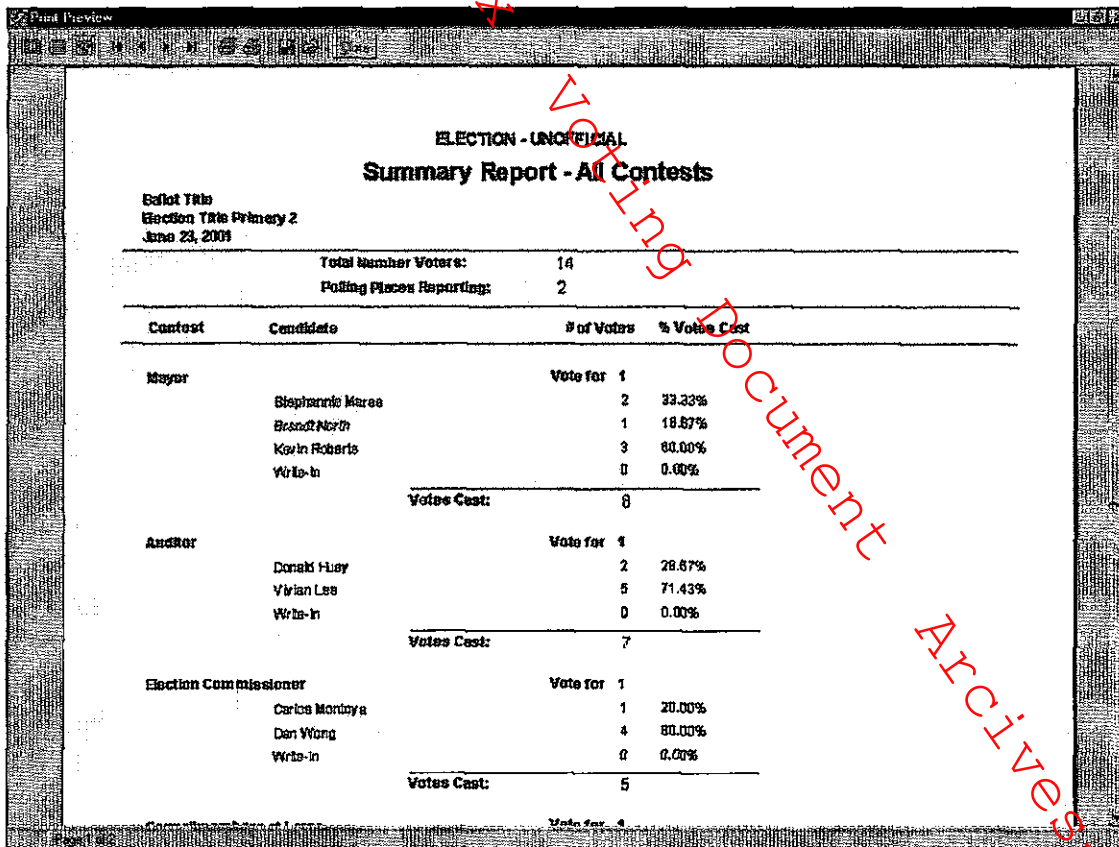



Figure 2-1 Print Preview window showing the **Summary Report - All Contests** report.

Steps for: Printing the Summary Report

- ✓ To print the **Summary Report - All Contests** report:
 - 1 Open the **Summary Report - All Contests** report as described above.
 - 2 Click the printer icon  at the top of the report window.
The report prints at the system printer.

-From Black Box Voting Document Archives-