

TALLY

eSlate™ Electronic Voting System
Tally System
Operations Manual

Hart InterCivic
Election Solutions Group

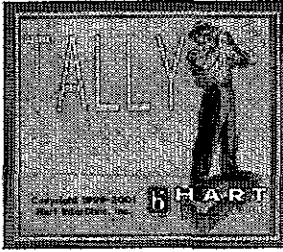
1650 Coal Creek Drive, Suite E
Lafayette, Colorado 80026

Phone: 303.385.6440 Fax: 303.385.6477

© Copyright 1999-2001 Hart InterCivic
6000-049 Rev. I



Hart InterCivic, Election Solutions Group is committed to election integrity and customer satisfaction. All products, components, and services provided to our customer shall be safe, secure, and effective for their intended use, and they shall meet or exceed the quality and reliability levels expected by the marketplace.



Contents

About This Book	9
Overview	9
The Tally Election database.	9
Status of the Tally Election database	9
Pre-Election Activities	10
Election Day Activities	10
Post-Election Day Activities	10
System Architecture	11
Audit Log	12
Information printed in the audit log.	12
Printer error.	12
Making Selections.	13
Clicking the mouse button	13
Making multiple selections at once.	13
Double-clicking	14
Documentation Roadmap.	15
eSlate™ Ballot Origination Software System Operations Manual.	15
eSlate™ Precinct Voting System Election Day Manual	15
eSlate™ Precinct Voting System Early Voting Manual	15
eSlate™ Precinct Voting System DAU 5000 Voting Unit Setup Manual.	15
eSlate™ Tally System Operations Manual (this book)	15
Ballot Now Operations Manual.	15
eSlate™ Electronic Voting System Product Description	15
 Chapter 1 Getting Started	 17
Starting the Tally System Application	17
Opening the Tally System window	17
Checking Disk Space	18
Check Disk Space window	18
Checking disk space	18
Copying the BOSS Database.	20
Copy BOSS Database window	20
Creating a new Tally database	21
Notes about copying a BOSS database into the Tally System.	22

Opening the Tally Election Database	23
Open Database window	23
Selecting a database to work with	25
Selecting a different database to work with	25
Chapter 2 Pre-Election Activities	27
Overview	27
Opening the Pre-Election Activities window	27
Pre-Election Activities window	28
Defining Valid Write-In Candidate Names for a Contest	30
Write-In Candidates window	30
Adding eligible write-in candidate names to a contest	32
Notes about adding write-in candidates	34
Deleting names from the Write-In Candidates window	35
Notes about deleting candidates from the Write-In Candidates window	35
Adding aliases (other spellings) for write-in names	36
Notes about adding aliases for write-in candidate names	38
Deleting aliases (other spellings) for write-in names	39
Defining Tally Options	40
Tally Options window	40
Setting date and time for display of unofficial reports	41
Tabulation Tests with Test Mode MBBs	42
Performing a tabulation test	42
Opening the Election for Tabulation	44
Changing the database status to Election OPEN	44
Chapter 3 Election Day Activities	45
Overview	45
Opening the Election Day Activities window	46
Election Day Activities window	46
Reading MBBs	49
Tabulating voted MBBs	49
Notes about reading an MBB into the Tally System	50
Managing Provisional Ballots	51
Reject Provisional Ballots window	52
Rejecting a provisional ballot	53
Assigning Unassigned Write-In Votes	55
Assign Write-Ins window	55
Assigning or rejecting unassigned write-in votes	56
Chapter 4 Manual Votes	59
Overview	59
Opening the Manual Votes Window	60
Manual Votes window	60

Notes about opening the Manual Votes window	62
Changing Votes Manually	63
Changing votes manually	63
Notes about the Manual Votes window	64
Chapter 5 Closing the Election	65
Overview	65
Closing the Election	66
Officially closing the election	66
Notes about closing the election	66
Chapter 6 Tally Reports	67
Overview	67
Summary of Tally Reports	69
Headers printed on reports	74
Viewing and Printing Reports	75
Viewing a report window	75
Printing a report	75
Closing a report window	75
Combined Official Canvass Report	76
Information in the Combined Official Canvass report	76
Opening the report window	78
Example of the Combined Official Canvass window	78
Printing the Combined Official Canvass report for the first contest on the ballot	79
Printing another contest's Combined Official Canvass report	79
Printing the Combined Official Canvass report for all contests	79
Example of the Combined Official Canvass report	79
Final Cumulative Report	80
Information in the Final Cumulative report	81
Opening the report window	82
Example of the Final Cumulative window	82
Example of the Final Cumulative report	83
Precinct Status Report	84
Information in the Precinct Status report	84
Opening the report window	85
Example of the Precinct Status window	85
Example of the Precinct Status report	85
Precinct Status with MBB ID's Report	86
Information in the Precinct Status with MBB ID's report	87
Opening the report window	88
Example of the Precinct Status with MBB IDs window	88
Example of the Precinct Status with MBB ID's report	88
Precinct Not In Status Report	89
Information in the Precinct Not In Status report	89
Opening the report window	90

Example of the Precincts Not In Status window	90
Example of the Precinct Not In Status report	90
Provisional Ballots Report	91
Information in the Provisional Ballots report	92
Opening the report window	93
Example of the Provisional Ballots window	93
Example of the Provisional Ballots report	93
Rejected Write-In Candidates Report	94
Information in the Rejected Write-In Candidates report	94
Opening the report window	94
Example of the Rejected Write-In Candidates window	95
Example of the Rejected Write-In Candidates report	95
Results Detail Report	96
Information in the Results Detail report	97
Opening the report window	98
Printing the report	99
Example of the Results Detail window	99
Example of the Results Detail report	99
Results Summary Report	100
Information in the Results Summary report	101
Opening the report window	103
Example of the Results Summary window	103
Example of the Results Summary report	103
Summary - All Contests Report	104
Information in the Summary - All Contests report	105
Opening the report window	107
Example of the Summary - All Contests window	107
Example of the Summary - All Contests report	107
Summary - Public - All Contests Report	108
Information in the Summary - Public - All Contests report	109
Opening the report window	110
Example of the Summary - Public - All Contests window	110
Example of the Summary - Public - All Contests report	110
Summary - All Contests by Precincts Report	111
Information in the Summary - All Contests by Precincts report	112
Opening the report window	113
Printing the report	114
Example of the Summary - All Contests by Precincts window	114
Example of the Summary - All Contests by Precincts report	114
Unreported Polling Places Report	115
Information in the Unreported Polling Places report	115
Opening the report window	116
Example of the Unreported Polling Places window	116
Example of the Unreported Polling Places report	116
Write-In Candidates Report	117
Information in the Write-In Candidates report	117

Opening the report window	118
Example of the Write-In Candidates window.	118
Viewing write-in candidates for selected contests	119
Removing the filter from the Write-In Candidates report	120
Notes about using the filter for the Write-In Candidates report	120
Example of the Write-In Candidates report	120
Chapter 7 Administration Tasks	121
Overview	121
Accessing Non-Tally Tasks	122
Enabling non-Tally tasks on the Administration menu	122
Change Password Task	123
Changing a user's logon password	123
Create New Users Task	124
Create New Users window	124
Defining users.	125
Archive Database Task	126
Archive Database window	126
Creating the archive copy of the election tally database	128
Chapter 8 Installation and Maintenance	129
Overview	129
Installing the Tally Application for the First Time	129
Starting the Setup program for a first-time install	130
Choose Setup Type window	131
Installing Tally with Full setup.	132
Installing Tally with Custom setup.	133
Installing Tally with Compact setup	135
Maintaining the Tally System Application	136
Starting the Setup program for maintenance	136
Welcome window for maintenance	137
Adding or removing selected components	137
Repairing the Tally application by reinstalling.	139
Removing all installed components.	140
Notes about removing installed components.	140
Index	143
Appendix A Audit Log Messages 149	
Appendix B Error Messages 157	
Appendix C Tally Report Examples 165	
List of Tally reports	165



About This Book

Main Topics

Overview , this page.	Making Selections on page 13.
System Architecture on page 11.	Documentation Roadmap on page 15.
Audit Log on page 12.	

Overview

This manual describes how to use the Tally application software to tally (count) the votes recorded on MBBs (Mobile Ballot Boxes) used with the Hart InterCivic, Election Solutions Group's eSlate™ Electronic Voting System equipment and software applications during:

- ◆ Test voting,
- ◆ Absentee Voting,
- ◆ Early Voting, and on
- ◆ Election Day.

The Tally application is password protected, which means a User ID and password is required to open Tally.

Real-time audit messages describing all operator input to the Tally application are printed at the system line printer (see **Audit Log** on page 12).

The Tally Election database

To use the Tally application for counting the votes in an election, the Administrator must copy the BOSS Election database used for the election into the Tally application (see **Copying the BOSS Database** on page 20). This database then becomes available in the **Open Database** window (see **Opening the Tally Election Database** on page 23).

Status of the Tally Election database

The status of the Tally Election database determines how you can write to and read from the database during:

- ◆ Pre-Election Activities (see page 10)
- ◆ Election Day Activities (see page 10)
- ◆ Post-Election Activities (see page 10)

The definitions of the three types of status for a Tally Election database are:

- ◆ **NEW** – When the database currently being used has no votes recorded yet (no MBBs from Test or Election have been read).
- ◆ **OPENED** – When the database currently being used has votes recorded in it.
- ◆ **CLOSED** – When the database has been closed because all MBBs for the election have been read and all manual votes have been processed (see **Chapter 4 Manual Votes**, page 59).

Pre-Election Activities

Before Election Day, you can perform the following tasks with the election's Tally Election database that has the NEW or OPENED status:

- ◆ Define eligible write-in candidate names and
- ◆ Read Test MBBs to perform a tabulation test, and
- ◆ View and print Test Tally reports.

Election Day Activities

On Election Day you can perform the following tasks with the election's Tally Election database that has the OPENED status:

- ◆ Manage challenged ballots,
- ◆ Assign write-in votes,
- ◆ Read election MBBs from:
 - Absentee ballots recorded with the Ballot Now application
 - Early Voting ballots
 - Election Day ballots
- ◆ View and print Tally Unofficial Tally reports,
- ◆ Add or subtract votes manually.

Post-Election Day Activities

After all MBBs for the election have been read and the manual votes task is complete you can perform the following tasks with the election's Tally Election database that has the CLOSED status:

- ◆ Close the Election
- ◆ View and print Official Tally reports
- ◆ Archive the election

System Architecture

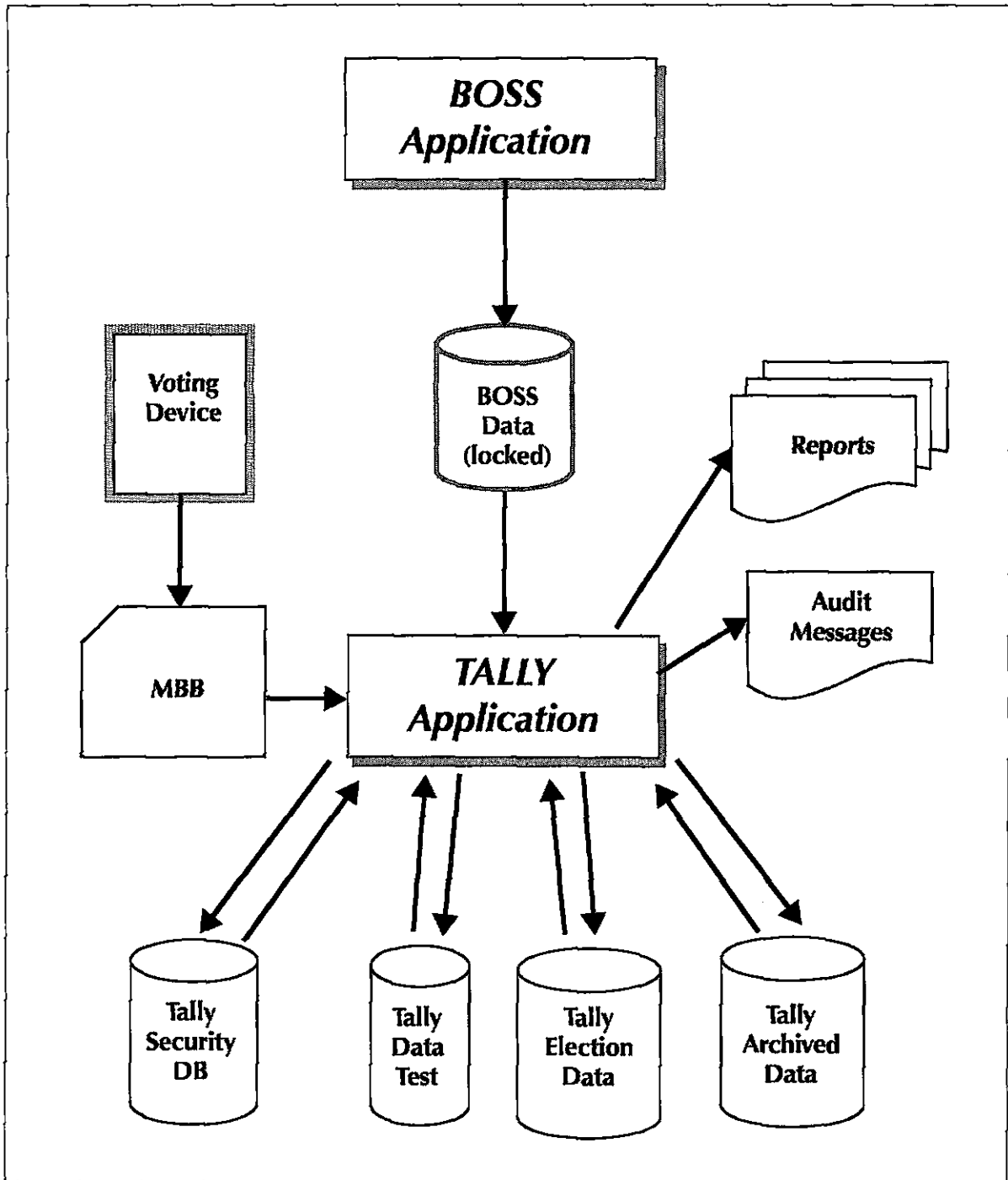


Figure 1 System architecture for the Tally System.

Audit Log

The Tally System application prints a real-time audit log to the system line printer.

Real-time audit messages are sent to the system line printer when one of the following activities occurs while you are working in the Tally System application:

- ◆ Open Database
- ◆ Open Election mode
- ◆ Read MBBs
- ◆ MBB read errors
- ◆ Challenged ballots tallied
- ◆ Challenged ballots rejected
- ◆ Report printed
- ◆ Assign write-ins rejected
- ◆ Assign write-ins accepted
- ◆ Close Election
- ◆ Update manual votes
- ◆ Add absentee votes
- ◆ Archive database
- ◆ Write-ins edited
- ◆ Copy BOSS database
- ◆ Test mode tabulation
- ◆ Manual votes modified
- ◆ Check disk space
- ◆ Log on
- ◆ Log off
- ◆ Printer error

In addition, any error messages presented during any of the above activities are also sent to the system line printer as they occur.

NOTE: It is recommended that you wait for the line printer to finish printing the current audit message before you perform the next activity in the Tally System application.

Information printed in the audit log

The date, time, event name, and user ID is included for each event printed in the audit log. Audit log messages are provided in **Appendix A**, beginning on page 149.

Printer error

If the line printer fails for some reason while you are using the Tally System application (i.e., powered off, paper out, loose cable, ribbon needs changing), a printer error message will appear (see **Figure 2**).

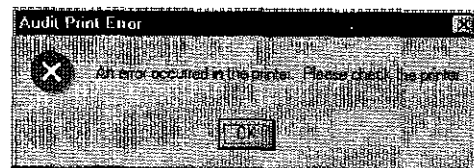




Figure 2 Audit Print Error message.

- 1 Click . Tally will close.
- 2 Fix the printer.
- 3 Start the Tally System application. The audit log will include the printer error.

Making Selections

Some suggestions for how to navigate in the Tally System application are provided in this section. You will often need to use the mouse to move to an item in a Tally System window, then select, or highlight, the item so that you can perform a command on that item. The instructions in this manual assume you are using a right-handed mouse.

Steps for: Clicking the mouse button

- ✓ When the instructions tell you to “click,” press the left mouse button once.
- ◆ To click a button such as , move the mouse pointer over the button and then press the left mouse button once.
- ◆ To select a field in a window so that it is highlighted (as shown in **Figure 3**), move the mouse pointer over the field, then press the left mouse button once.

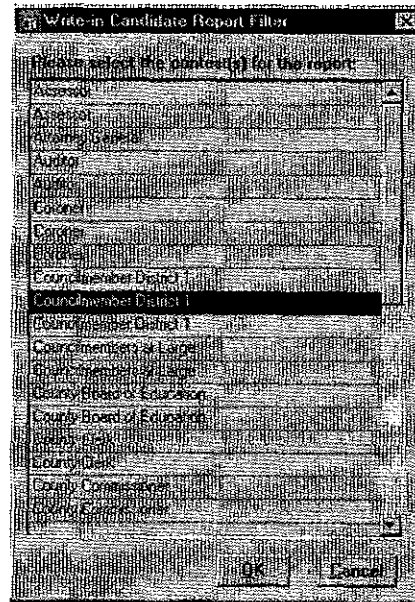


Figure 3 A selected (highlighted) field in a window.

Steps for: Making multiple selections at once

- ✓ To select a multiple items, as from a list in a window (see **Figure 4** on page 14):
 - Move the mouse pointer over the first item, then
 - press the left mouse button once, then
 - press and hold down the **Ctrl** key on the keyboard, then
 - move the mouse pointer over the next item, then
 - press the left mouse button again, then
 - when you are finished highlighting items,
 - release the Ctrl key.

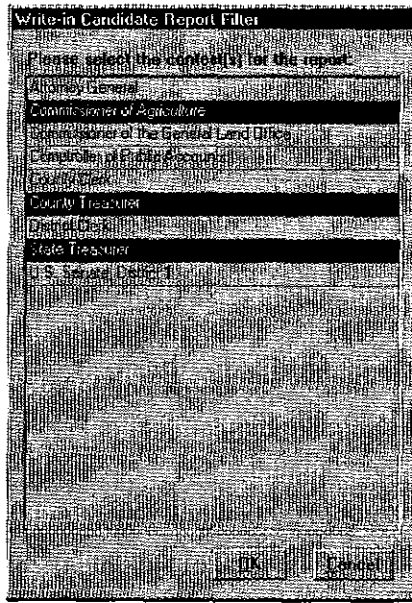


Figure 4 Multiple items selected in the **Available Precincts** list.

Steps for: Double-clicking

- ✓ When the instructions tell you to “double-click,” press the left mouse button rapidly twice.

Documentation Roadmap

Manuals for the eSlate™ Electronic Voting System software and equipment from Hart InterCivic, Election Solutions Group include the following:

eSlate™ Ballot Origination Software System Operations Manual

This manual describes how to use the Ballot Origination Software System™ software application, referred to as BOSS, to create an Election database from which you can create MBBs (Mobile Ballot Box™) for use with the eSlate Electronic Voting System.

eSlate™ Precinct Voting System Election Day Manual

This manual describes how to set up and use the eSlate™ Precinct Voting System (PVS) equipment in a polling place on Election Day.

eSlate™ Precinct Voting System Early Voting Manual

This manual describes how to set up and use the PVS equipment in Early Voting polling places.

eSlate™ Precinct Voting System DAU 5000 Voting Unit Setup Manual

This manual describes how to set up and use the DAU 5000™ voting units.

eSlate™ Tally System Operations Manual (this book)

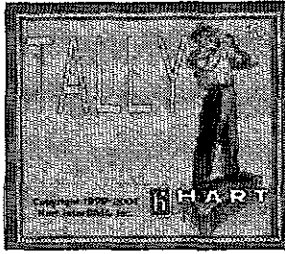
This manual describes how to use the Tally™ application software to read and tally the votes on MBBs that were used during an election.

Ballot Now Operations Manual

This manual describes how to manage paper ballots for an election created from the eSlate Electronic Voting System.

eSlate™ Electronic Voting System Product Description

This manual describes how the various software and equipment components of the eSlate Electronic Voting System are used to run an election.



Chapter 1

Getting Started

Main Topics

Starting the Tally System Application on page 17, this page.	Copying the BOSS Database on page 20.
Checking Disk Space on page 18.	Opening the Tally Election Database on page 23.

Starting the Tally System Application

The Tally System application may be installed for the first time or maintained by:

- ◆ Hart InterCivic, Election Solutions Group personnel, or
- ◆ an authorized customer System Administrator with a valid User ID and password.

Steps for: Opening the Tally System window

A User ID and password are required to start the Tally System application.

- ✓ To start the Tally System application:
 - 1 Click **START**, the Start button on the Windows task bar.
 - 2 From the **Start** menu, choose **Programs**→**Tally**.
The splash screen for Tally System appears, followed by the Tally System **Logon** window (see **Figure 1-1**).

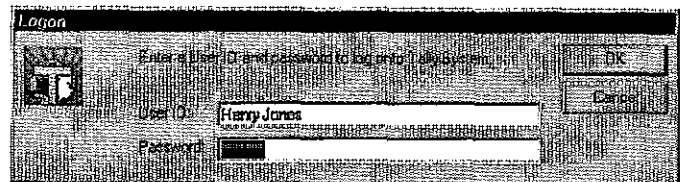


Figure 1-1 Tally System Logon window.

- 3 In the **User ID** field, type your user ID.
- 4 In the **Password** field, type your password.
- 5 Click **OK**.
The **Check Disk Space** window appears (see **Check Disk Space window** on page 18).

Checking Disk Space

The **Check Disk Space** window gives you the opportunity to determine if there is enough free space on the computer's hard drive to complete a tally for an election. To check the disk space accurately you will need to enter the following information in the **Check Disk Space** window (see **Figure 1-2**) for the election you want to tally:

- ◆ The location on the computer's hard drive of the BOSSDATA.db file
- ◆ The number of MBBs that must be read by the Tally System

Check Disk Space window

The **Check Disk Space** window automatically appears at the following times:

- ◆ Right after you log into the Tally System application.
- ◆ Each time you select **Open Database** from the **File** menu.

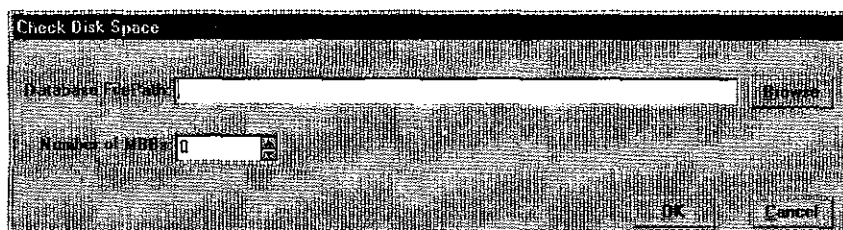


Figure 1-2 Check Disk Space window.

Steps for: Checking disk space

You can determine if there is enough free space on the computer's hard drive to complete a tally for an election using the **Check Disk Space** window.

NOTE: If you do not want to check disk space, click **Cancel** in the **Check Disk Space** window to close it.

- ✓ To check disk space in the **Check Disk Space** window:

1 Click **Browse**.

The **Select Database File** window appears (see **Figure 1-3**)

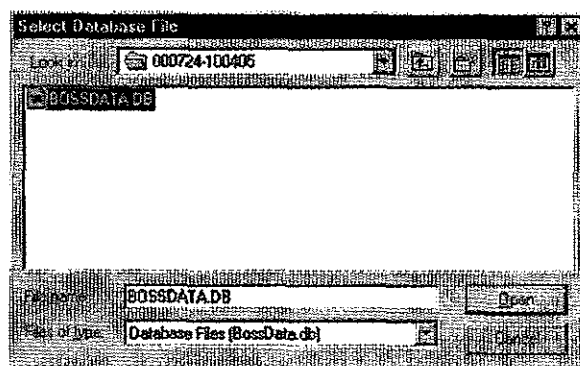



Figure 1-3 Select Database File window.

- 2 Navigate to the database (in either the **Tally\Database** folder or **Boss\Database** folder) you want to check disk space for, and select it so that *BossData.db* filename appears in the **File name** field.
- 3 Click  in the **Select Database File** window.
 - The **Select Database File** window closes.
 - The complete path to the *BossData.db* database file you selected appears in the **Database FilePath** field (see **Figure 1-4**).

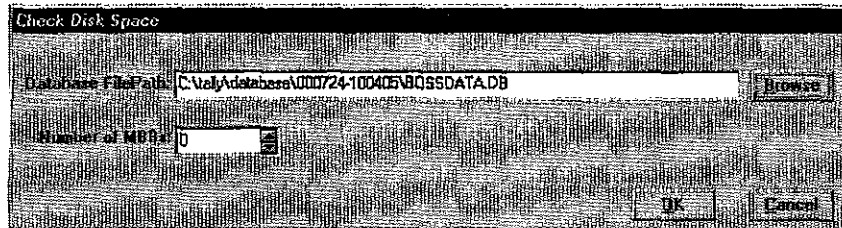


Figure 1-4 Check Disk Space window showing the path to the database defined.

- 4 Click in the **Number of MBBs** field and type the number of MBBs that will be read by the Tally System for the election (see **Figure 1-5**).

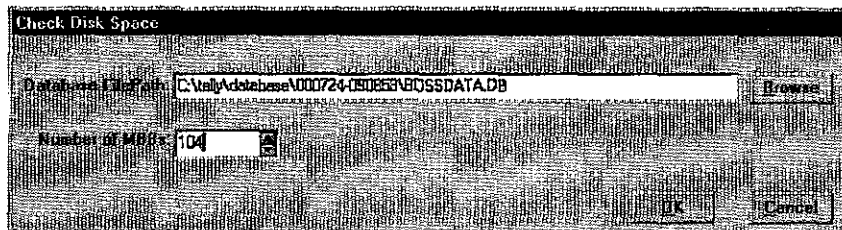




Figure 1-5 Check Disk Space window showing the number of MBBs defined.

- 5 Click  in the **Check Disk Space** window.
 - a. If there is enough free disk space on the computer's hard drive to perform the tally, the message shown in **Figure 1-6** appears. Click  in the **Check Disk Space** dialog box to close it.

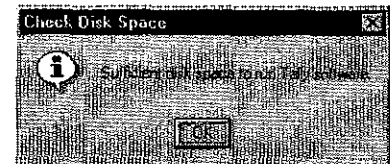



Figure 1-6 Check Disk Space dialog box.

- If there is an existing Tally database, the **Open Database** window appears inside the Tally System application window (see **Open Database window** on page 23).
 - If no Tally databases exist, you will need to create the Tally Election database for the election by copying the election's BOSS Election database into Tally (see **Copying the BOSS Database** on page 20).
- b. If there is not enough free disk space on the computer's hard drive to perform the tally, the message shown in **Figure 1-7** appears. Click  in the message dialog box to close it, then ask the system administrator to free up enough free disk space on the computer's hard drive to perform the tally.

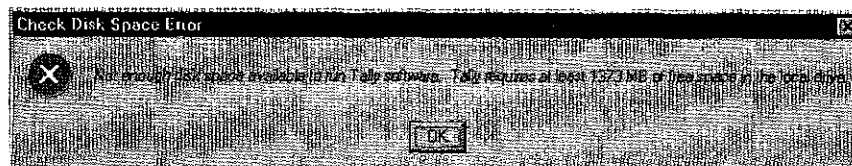


Figure 1-7 Check Disk Space Error dialog box.